

# Graph of the Week 3PA

Name \_\_\_\_\_

Date \_\_\_\_\_

Analyze the graphs below and write a reflection on what you think the graphs are communicating to you. To guide you with your response, start with some observations.

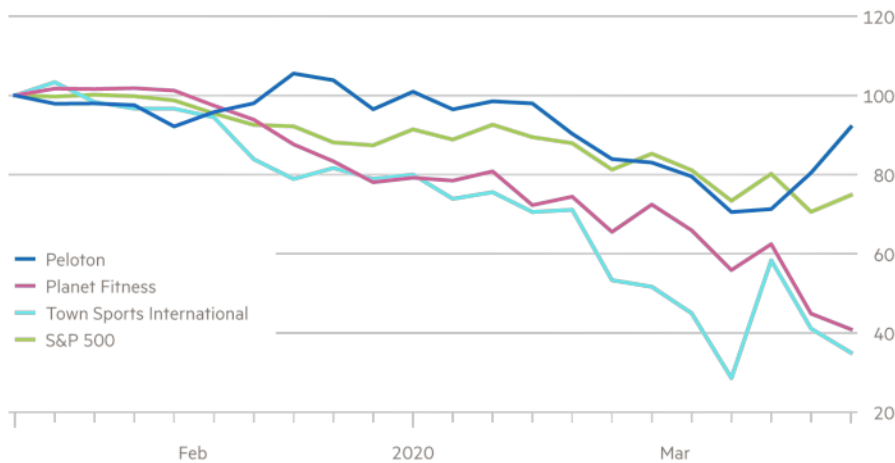
- What is the topic of the graph?
- What quantities are being compared? If there are x- and y- axes, what do they represent?
- What are some observations you can make based on the graph?

### Questions to ask when reading graphs:

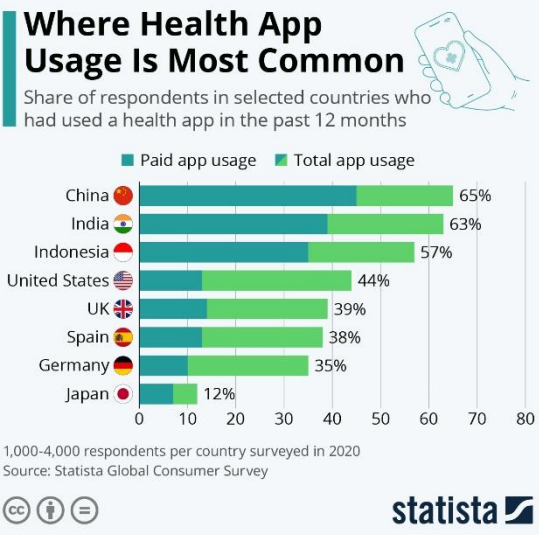
- Is there an upward or downward trend?
- Are there any sudden spikes in the graph?
- What is being compared in the graph?
- What prediction can I make for the future?
- What inferences can I make about the graph?

## Investors back Peloton as traditional gyms close their doors

Share prices (rebased)



Source: Refinitiv  
© FT



### A. Analysis

---

---

---

---

---

---

---

---

---

---

---

---

---

---

### B. What can you foresee happening in the near future?

---

---

---

---

---

---

C. Based on your response in part B, what solution(s) can you investigate or what other information/resources can you gather to strengthen your argument?

---

---

---

---

---

---

---

---

---

---

Make an illustration or represent the data in your own way in the space below:

